

PROJECT MANAGER: Chris Barksdale, PE (703) 259-2768 JNQ/AL  
SURVEYED BY, DATE: Brian Eitelcher, L.S. (703) 259-2355 JNQ/AL, August 2015  
DESIGN BY: Tyler Long, PE - Whitman, Reardon & Associates, (703) 293-9172  
SUBSURFACE UTILITY BY, DATE: So-Deep, Inc., (703) 361-6005, August 2015

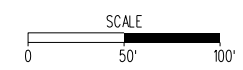
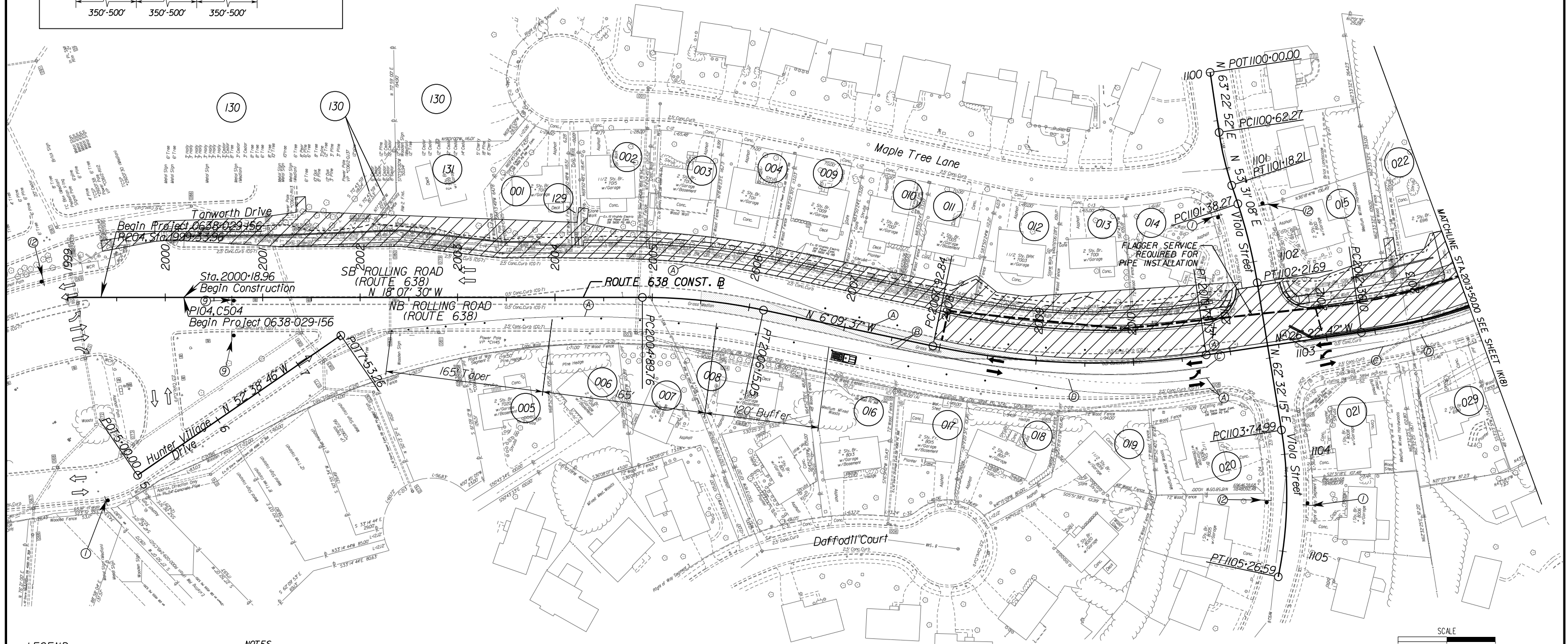
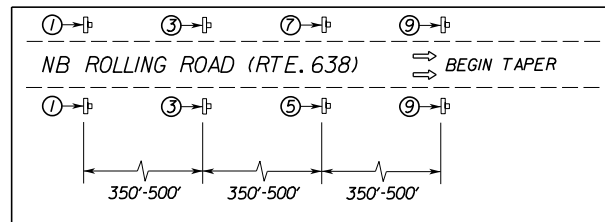
# TRANSPORTATION MANAGEMENT PLAN PHASE 2

REVISED	STATE	ROUTE	STATE PROJECT	SHEET NO.
	VA.	638	0638-029-156 P-104, R-204, C-504	1K(7)

DESIGN FEATURES RELATING TO CONSTRUCTION OR TO REGULATION AND CONTROL OF TRAFFIC MAY BE SUBJECT TO CHANGE AS DEEMED NECESSARY BY THE DEPARTMENT

Whitman, Reardon & Associates  
Fairfax, Virginia  
ROADWAY ENGINEER

WORKZONE APPROACH DETAIL 2  
(FIGURE TTC-16J)  
N.T.S.

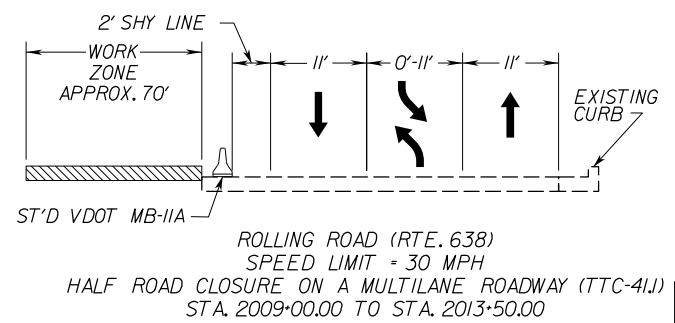
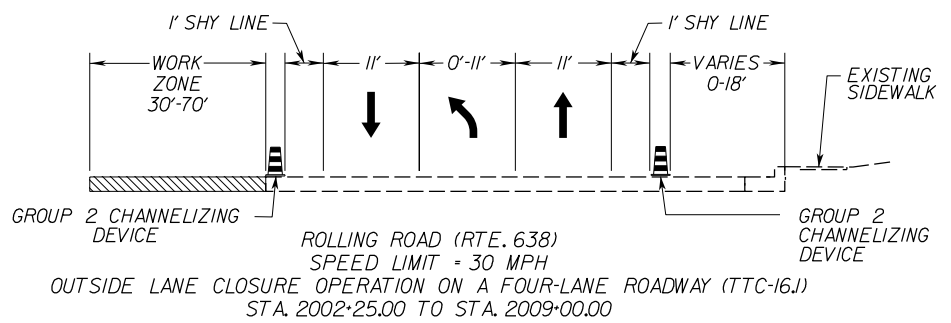


**LEGEND**

- WORK ZONE AREA
- TEMP. PAVEMENT FROM PHASE 1
- GROUP 2 CHANNELIZING DEVICE
- TYPE 3 BARRICADE
- TRAFFIC BARRIER SERVICE
- TL-2 TEMP. ATTENUATOR
- SIGN
- EXISTING DIRECTION OF TRAVEL
- TEMPORARY DIRECTION OF TRAVEL
- WORK VEHICLE

**NOTES**

- 1) SEE SHEET 1K(1) FOR SIGN LEGEND.
- 2) PROJECT LIMITS SIGNING SHALL BE IN ACCORDANCE WITH FIGURE TTC-53.0 OF THE 2011 WAPM.
- 3) OUTSIDE LANE CLOSURE ON ROLLING ROAD SHALL BE IN ACCORDANCE WITH FIGURE TTC-16J OF THE WAPM. HALF ROAD CLOSURE OF ROLLING ROAD SHALL BE IN ACCORDANCE WITH TTC-41J OF THE WAPM.
- 4) MAINTAIN ACCESS TO ENTRANCES THROUGHOUT DURATION OF CONSTRUCTION.
- 5) ALL CHANNELIZING DEVICE SPACING SHALL BE IN ACCORDANCE WITH TABLE 6H-4 OF THE 2011 WAPM.
- 6) EXISTING PAVEMENT MARKINGS THAT CONFLICT WITH PROPOSED TEMPORARY LANE MARKINGS SHALL BE COMPLETELY ERADICATED.



**R.O.W. PLANS**

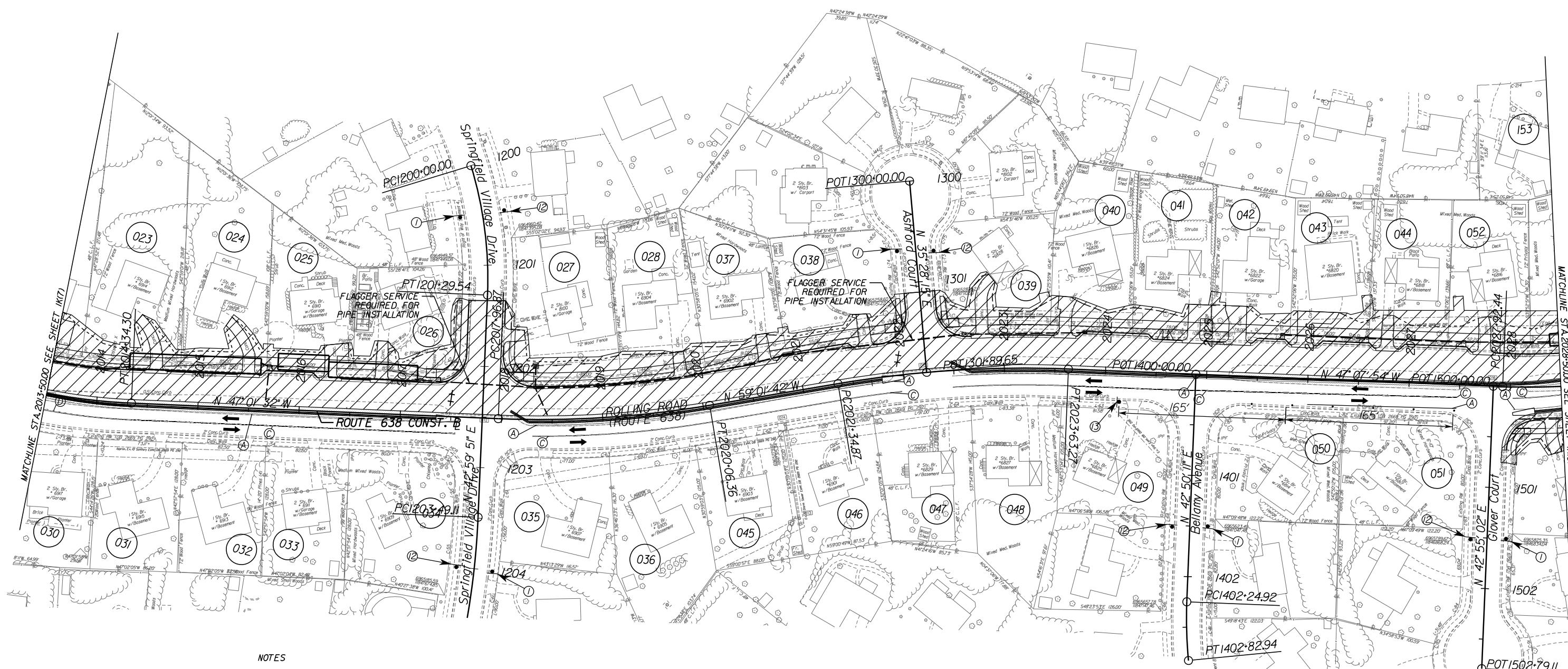
THESE PLANS ARE UNFINISHED AND UNAPPROVED AND ARE NOT TO BE USED FOR ANY TYPE OF CONSTRUCTION.

PROJECT	SHEET NO.
0638-029-156	1K(7)

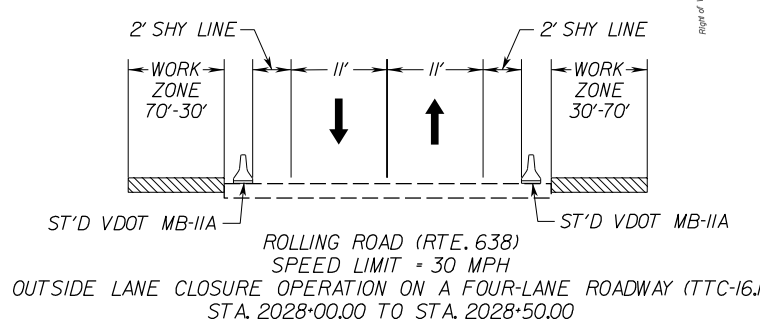
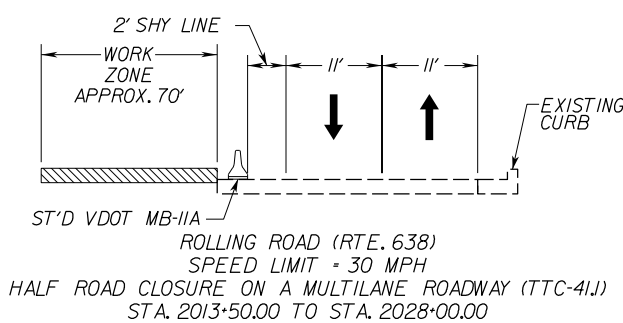
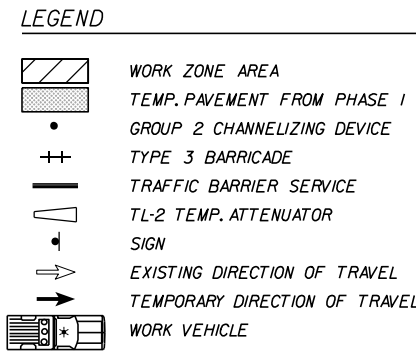
PROJECT MANAGER: Chris Barksdale, PE (703) 259-2768 JNOVA  
SURVEYED BY: DATE Brian Elstner, L.S. (703) 259-2355 JNOVA, August 2015  
DESIGN BY: Tyler Long, PE - Whitman, Reardon & Associates, (703) 293-9072  
SUBSURFACE UTILITY BY: DATE So Deep, Inc. (703) 3616005, August 2015

# TRANSPORTATION MANAGEMENT PLAN PHASE 2

REVISED	STATE	ROUTE	STATE PROJECT	SHEET NO.
	VA.	638	0638-029-156 P-104, R-204, C-504	1K(8)
DESIGN FEATURES RELATING TO CONSTRUCTION OR TO REGULATION AND CONTROL OF TRAFFIC MAY BE SUBJECT TO CHANGE AS DEEMED NECESSARY BY THE DEPARTMENT				
Whitman, Reardon & Associates Fairfax, Virginia ROADWAY ENGINEER				



- NOTES**
- 1) SEE SHEET 1K(1) FOR SIGN LEGEND.
  - 2) PROJECT LIMITS SIGNING SHALL BE IN ACCORDANCE WITH FIGURE TTC-53.D OF THE 2011 WAPM.
  - 3) HALF ROAD CLOSURE ON ROLLING ROAD SHALL BE IN ACCORDANCE WITH FIGURE TTC-41.J OF THE WAPM.
  - 4) PIPE INSTALLATIONS ACROSS SPRINGFIELD VILLAGE DRIVE AND ASHFORD COURT SHALL BE IN ACCORDANCE WITH FIGURE TTC-23.J OF THE 2011 WAPM.
  - 5) MAINTAIN ACCESS TO ENTRANCES THROUGHOUT DURATION OF CONSTRUCTION.
  - 6) ALL CHANNELIZING DEVICE SPACING SHALL BE IN ACCORDANCE WITH TABLE 6H-4 OF THE 2011 WAPM.
  - 7) EXISTING PAVEMENT MARKINGS THAT CONFLICT WITH PROPOSED TEMPORARY LANE MARKINGS SHALL BE COMPLETELY ERADICATED.



SCALE  
0 50' 100'

**R.O.W. PLANS**

THESE PLANS ARE UNFINISHED AND UNAPPROVED AND ARE NOT TO BE USED FOR ANY TYPE OF CONSTRUCTION.

PROJECT	SHEET NO.
0638-029-156	1K(8)

PROJECT MANAGER: Chris Barksdale, PE (703) 259-2768 JNQ/AL  
SURVEYED BY, DATE: Brian Eitelcher, L.S. (703) 259-2355 JNQ/AL, August 2015  
DESIGN BY: Tyler Long, PE - WhitmanRequardt & Associates (703) 293-9072  
SUBSURFACE UTILITY BY, DATE: So-Deep, Inc. (703) 3616005, August 2015

# TRANSPORTATION MANAGEMENT PLAN

## PHASE 2

REVISED	STATE	ROUTE	STATE PROJECT	SHEET NO.
	VA	638	0638-029-156 P-104, R-204, C-504	1K(9)

DESIGN FEATURES RELATING TO CONSTRUCTION OR TO REGULATION AND CONTROL OF TRAFFIC MAY BE SUBJECT TO CHANGE AS DEEMED NECESSARY BY THE DEPARTMENT

Whitman, Requardt & Associates  
Fairfax, Virginia  
ROADWAY ENGINEER

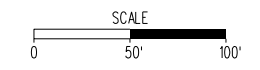
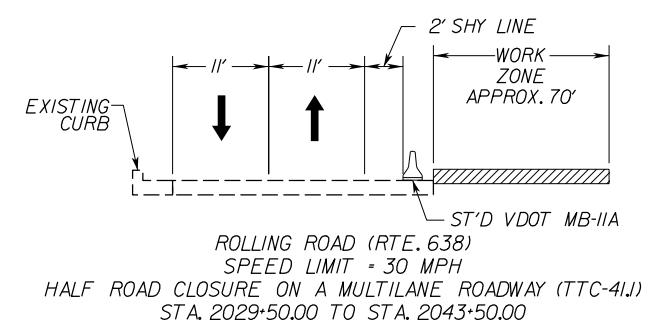
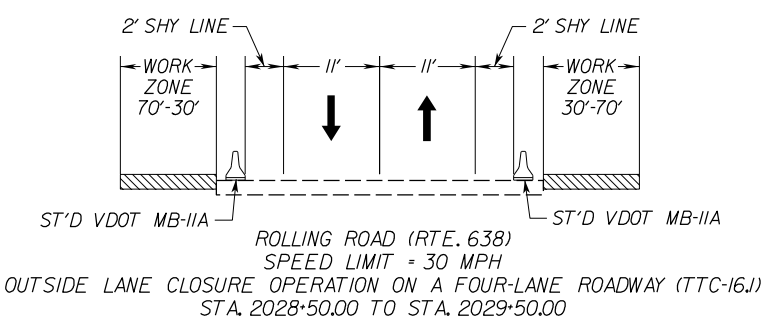


### LEGEND

- WORK ZONE AREA
- TEMP. PAVEMENT FROM PHASE I GROUP 2 CHANNELIZING DEVICE
- TYPE 3 BARRICADE
- TRAFFIC BARRIER SERVICE
- TL-2 TEMP. ATTENUATOR
- SIGN
- EXISTING DIRECTION OF TRAVEL
- TEMPORARY DIRECTION OF TRAVEL
- WORK VEHICLE

### NOTES

- 1) SEE SHEET 1K(1) FOR SIGN LEGEND.
- 2) PROJECT LIMITS SIGNING SHALL BE IN ACCORDANCE WITH FIGURE TTC-53.0 OF THE 2011 WAPM.
- 3) HALF ROAD CLOSURE ON ROLLING ROAD SHALL BE IN ACCORDANCE WITH FIGURE TTC-41J OF THE 2011 WAPM.
- 4) PIPE INSTALLATION ACROSS TAFT DRIVE SHALL BE IN ACCORDANCE WITH FIGURE TTC-23.J OF THE 2011 WAPM.
- 5) MAINTAIN ACCESS TO ENTRANCES THROUGHOUT DURATION OF CONSTRUCTION.
- 6) ALL CHANNELIZING DEVICE SPACING SHALL BE IN ACCORDANCE WITH TABLE 6H-4 OF THE 2011 WAPM.
- 7) EXISTING PAVEMENT MARKINGS THAT CONFLICT WITH PROPOSED TEMPORARY LANE MARKINGS SHALL BE COMPLETELY ERADICATED.



**R.O.W. PLANS**

THESE PLANS ARE UNFINISHED AND UNAPPROVED AND ARE NOT TO BE USED FOR ANY TYPE OF CONSTRUCTION.

PROJECT	SHEET NO.
0638-029-156	1K(9)



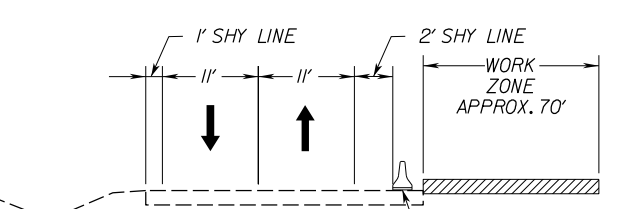
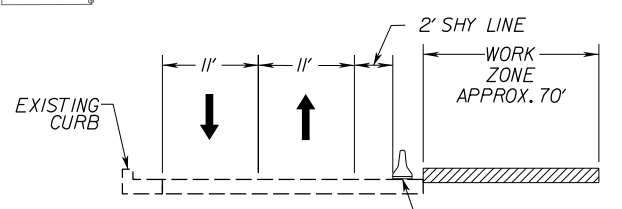
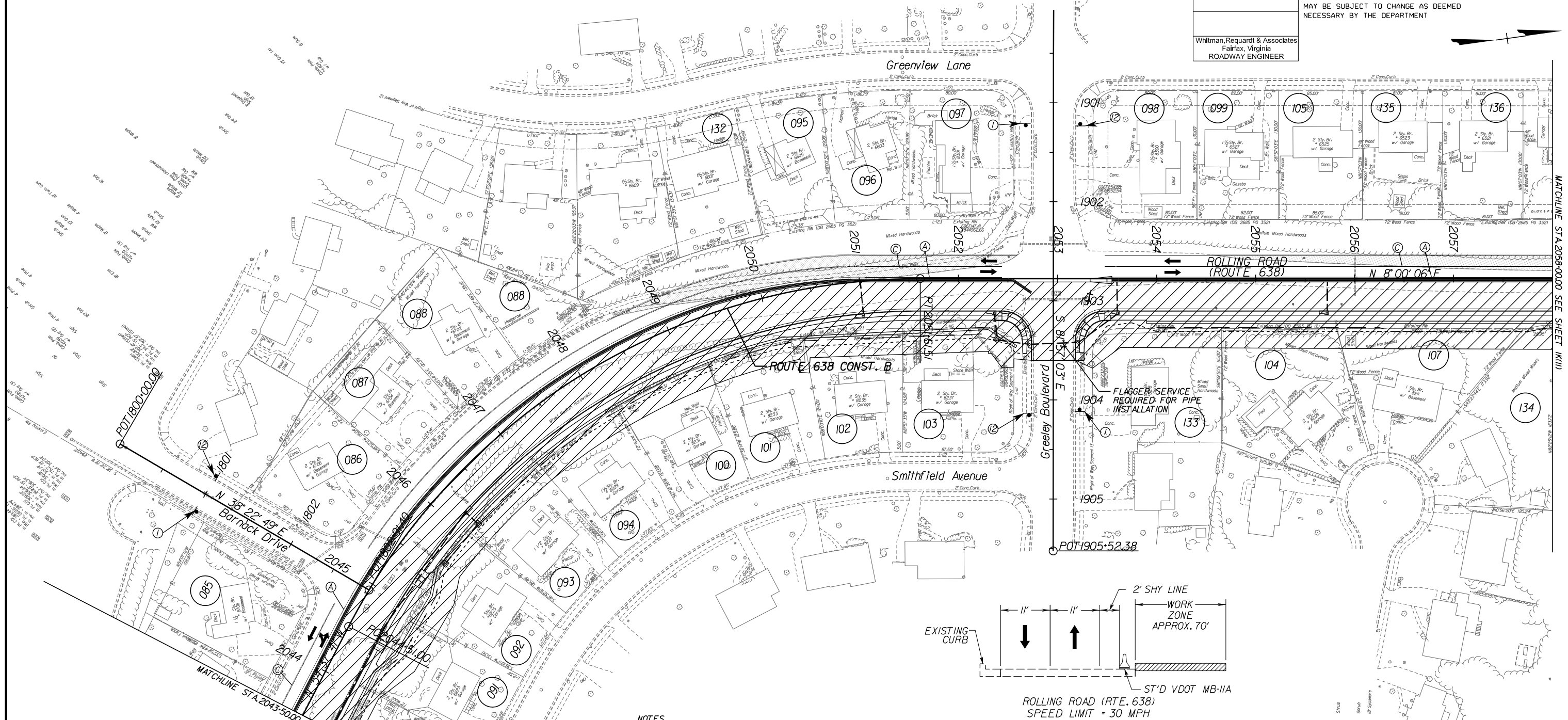
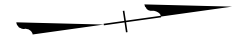
PROJECT MANAGER: Chris Barksdale, PE (703) 259-2768, INOVA  
SURVEYED BY, DATE: Brian Eltcher, L.S. (703) 259-2355, INOVA, August 2015  
DESIGN BY: Tyler Long, PE, Whitman, Requardt & Associates, (703) 293-9072  
SUBSURFACE UTILITY BY, DATE: So-Deep, Inc., (703) 361-6005, August 2015

# TRANSPORTATION MANAGEMENT PLAN PHASE 2

REVISED	STATE	ROUTE	STATE PROJECT	SHEET NO.
	VA.	638	0638-029-156 P-104, R-204, C-504	1K(10)

DESIGN FEATURES RELATING TO CONSTRUCTION OR TO REGULATION AND CONTROL OF TRAFFIC MAY BE SUBJECT TO CHANGE AS DEEMED NECESSARY BY THE DEPARTMENT

Whitman, Requardt & Associates  
Fairfax, Virginia  
ROADWAY ENGINEER



- NOTES
- 1) SEE SHEET 1K(1) FOR SIGN LEGEND.
  - 2) PROJECT LIMITS SIGNING SHALL BE IN ACCORDANCE WITH FIGURE TTC-53.0 OF THE 2011 WAPM.
  - 3) HALF ROAD CLOSURE ON A MULTILANE ROADWAY SHALL BE IN ACCORDANCE WITH FIGURE TTC-41J OF THE 2011 WAPM.
  - 4) PIPE INSTALLATION ACROSS GREELEY BOULEVARD SHALL BE IN ACCORDANCE WITH FIGURE TTC-23.J OF THE 2011 WAPM.
  - 5) MAINTAIN ACCESS TO ENTRANCES THROUGHOUT DURATION OF CONSTRUCTION.
  - 6) ALL CHANNELIZING DEVICE SPACING SHALL BE IN ACCORDANCE WITH TABLE 6H-4 OF THE 2011 WAPM.
  - 7) EXISTING PAVEMENT MARKINGS THAT CONFLICT WITH PROPOSED TEMPORARY LANE MARKINGS SHALL BE COMPLETELY ERADICATED.

LEGEND

- WORK ZONE AREA
- TEMP. PAVEMENT FROM PHASE I
- GROUP 2 CHANNELIZING DEVICE
- TYPE 3 BARRICADE
- TRAFFIC BARRIER SERVICE
- TL-2 TEMP. ATTENUATOR
- SIGN
- EXISTING DIRECTION OF TRAVEL
- TEMPORARY DIRECTION OF TRAVEL
- WORK VEHICLE

R.O.W. PLANS

THESE PLANS ARE UNFINISHED AND UNAPPROVED AND ARE NOT TO BE USED FOR ANY TYPE OF CONSTRUCTION.

PROJECT	SHEET NO.
0638-029-156	1K(10)

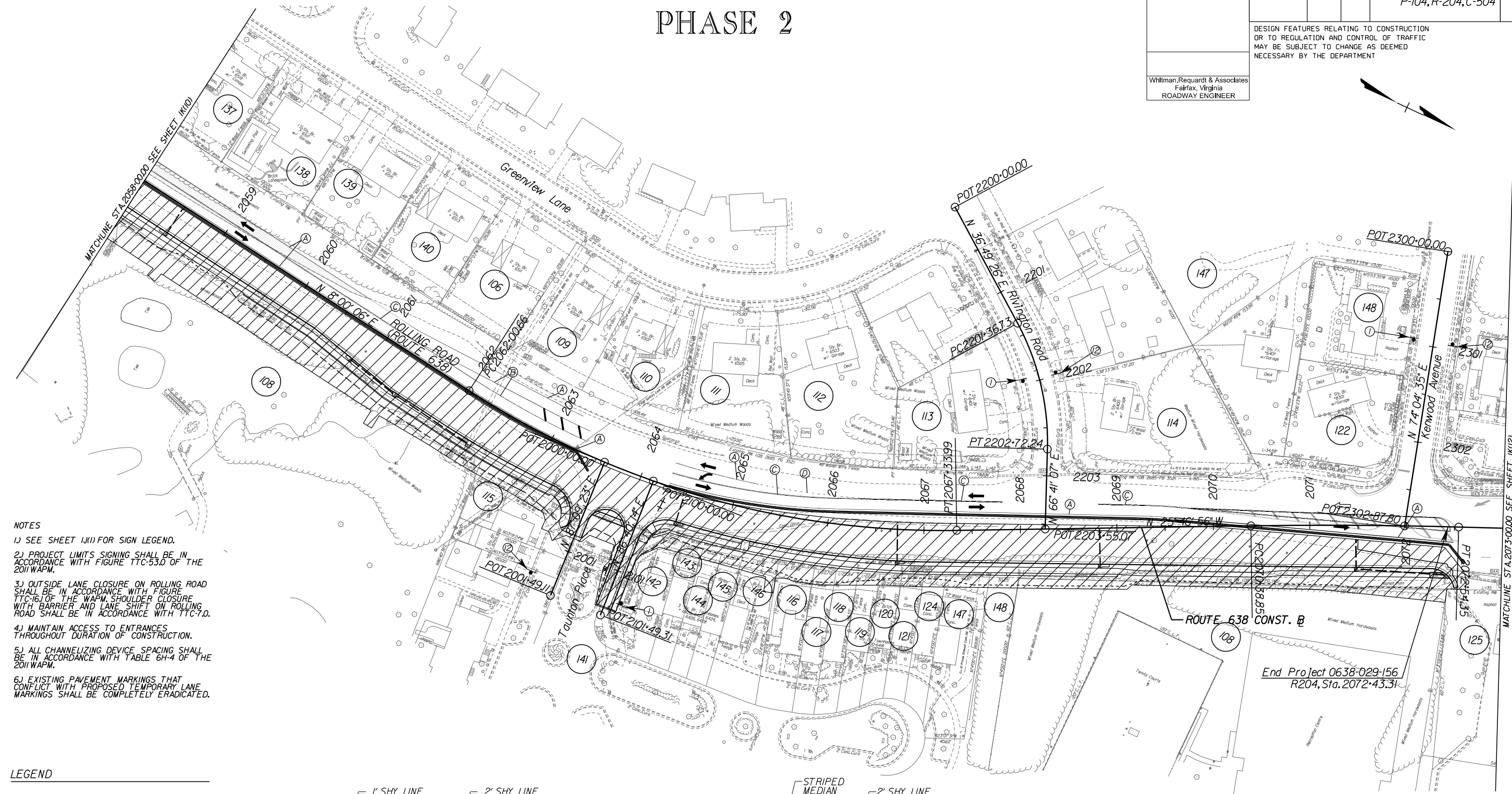
PROJECT MANAGER: Chris Barksdale, PE (703) 259-2768 JNQ/AL  
SURVEYED BY, DATE: Brian Eltcher, L.S. (703) 259-2355 JNQ/AL, August 2015  
DESIGN BY: Tyler Long, PE - Whitman, Requardt & Associates (703) 293-9072  
SUBSURFACE UTILITY BY, DATE: So-Deep, Inc. (703) 361-6005, August 2015

# TRANSPORTATION MANAGEMENT PLAN PHASE 2

REVISED	STATE	ROUTE	STATE PROJECT	SHEET NO.
	VA.	638	0638-029-156 P-104, R-204, C-504	1K(11)

DESIGN FEATURES RELATING TO CONSTRUCTION OR TO REGULATION AND CONTROL OF TRAFFIC MAY BE SUBJECT TO CHANGE AS DEEMED NECESSARY BY THE DEPARTMENT

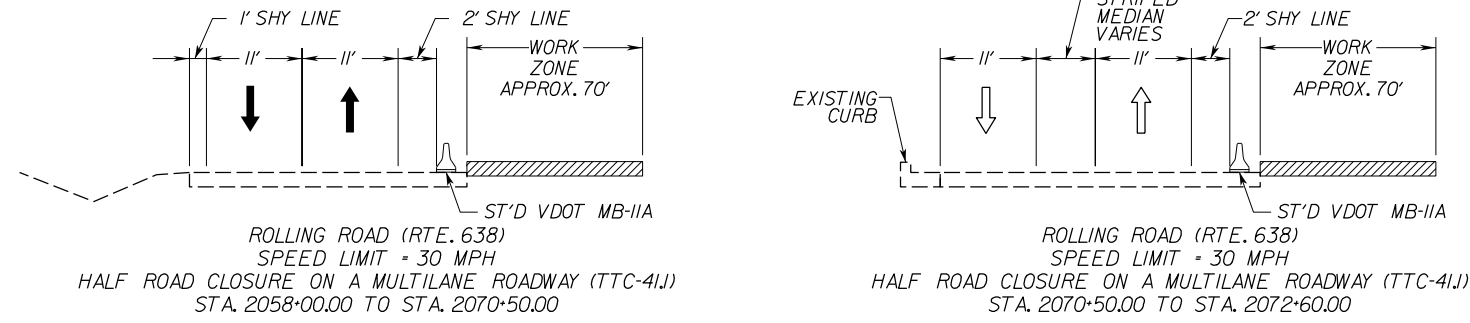
Whitman, Requardt & Associates  
Fairfax, Virginia  
ROADWAY ENGINEER



- NOTES**
- 1) SEE SHEET 1K(1) FOR SIGN LEGEND.
  - 2) PROJECT LIMITS SIGNING SHALL BE IN ACCORDANCE WITH FIGURE TTC-53.0 OF THE 2011 WAPM.
  - 3) OUTSIDE LANE CLOSURE ON ROLLING ROAD SHALL BE IN ACCORDANCE WITH FIGURE TTC-16.0 OF THE WAPM. SHOULDER CLOSURE WITH BARRIER AND LANE SHIFT ON ROLLING ROAD SHALL BE IN ACCORDANCE WITH TTC-7.0.
  - 4) MAINTAIN ACCESS TO ENTRANCES THROUGHOUT DURATION OF CONSTRUCTION.
  - 5) ALL CHANNELIZING DEVICE SPACING SHALL BE IN ACCORDANCE WITH TABLE 6H-4 OF THE 2011 WAPM.
  - 6) EXISTING PAVEMENT MARKINGS THAT CONFLICT WITH PROPOSED TEMPORARY LANE MARKINGS SHALL BE COMPLETELY ERADICATED.

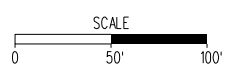
**LEGEND**

- WORK ZONE AREA
- TEMP. PAVEMENT FROM PHASE 1
- GROUP 2 CHANNELIZING DEVICE
- TYPE 3 BARRICADE
- TRAFFIC BARRIER SERVICE
- TL-2 TEMP. ATTENUATOR
- SIGN
- EXISTING DIRECTION OF TRAVEL
- TEMPORARY DIRECTION OF TRAVEL
- WORK VEHICLE



**R.O.W. PLANS**

THESE PLANS ARE UNFINISHED AND UNAPPROVED AND ARE NOT TO BE USED FOR ANY TYPE OF CONSTRUCTION.



PROJECT	SHEET NO.
0638-029-156	1K(11)

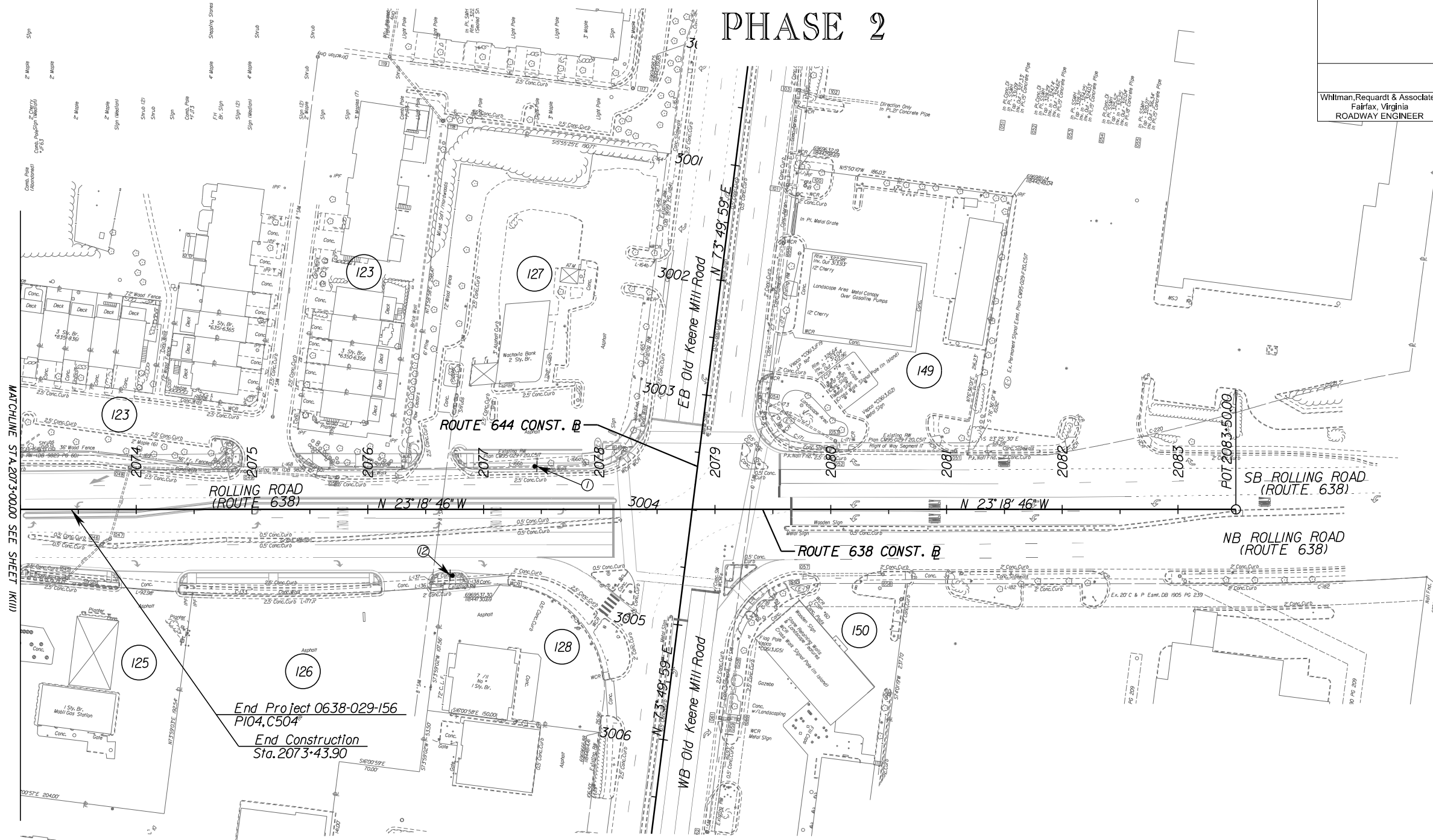
PROJECT MANAGER: Chris Barksdale, PE (703) 259-2768, INOVA  
SURVEYED BY: DATE Brian Eitelcher, L.S. (703) 259-2355, INOVA, August 2015  
DESIGN BY: Tyler Long, PE - Whitman, Requardt & Associates, (703) 293-9072  
SUBSURFACE UTILITY BY: DATE So Deep, Inc., (703) 361-6005, August 2015

# TRANSPORTATION MANAGEMENT PLAN PHASE 2

REVISED	STATE	ROUTE	STATE PROJECT	SHEET NO.
	VA.	638	0638-029-156 P-104, R-204, C-504	1K(12)

DESIGN FEATURES RELATING TO CONSTRUCTION OR TO REGULATION AND CONTROL OF TRAFFIC MAY BE SUBJECT TO CHANGE AS DEEMED NECESSARY BY THE DEPARTMENT

Whitman, Requardt & Associates  
Fairfax, Virginia  
ROADWAY ENGINEER

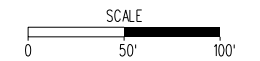


**LEGEND**

- WORK ZONE AREA
- TEMP. PAVEMENT FROM PHASE 1
- GROUP 2 CHANNELIZING DEVICE
- TYPE 3 BARRICADE
- TRAFFIC BARRIER SERVICE
- TL-2 TEMP. ATTENUATOR
- SIGN
- EXISTING DIRECTION OF TRAVEL
- TEMPORARY DIRECTION OF TRAVEL
- WORK VEHICLE

**NOTES**

- 1) SEE SHEET 1K(1) FOR SIGN LEGEND.
- 2) PROJECT LIMITS SIGNING SHALL BE IN ACCORDANCE WITH FIGURE TTC-53.0 OF THE 2011 WAPM.
- 3) MAINTAIN ACCESS TO ENTRANCES THROUGHOUT DURATION OF CONSTRUCTION.
- 4) ALL CHANNELIZING DEVICE SPACING SHALL BE IN ACCORDANCE WITH TABLE 6H-4 OF THE 2011 WAPM.
- 5) EXISTING PAVEMENT MARKINGS THAT CONFLICT WITH PROPOSED TEMPORARY LANE MARKINGS SHALL BE COMPLETELY ERADICATED.



**R.O.W. PLANS**

THESE PLANS ARE UNFINISHED AND UNAPPROVED AND ARE NOT TO BE USED FOR ANY TYPE OF CONSTRUCTION.

PROJECT	SHEET NO.
0638-029-156	1K(12)