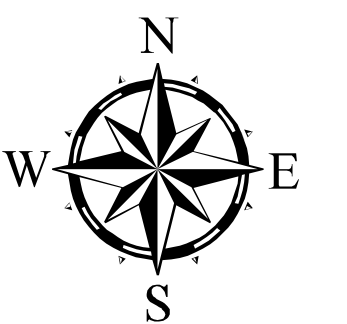
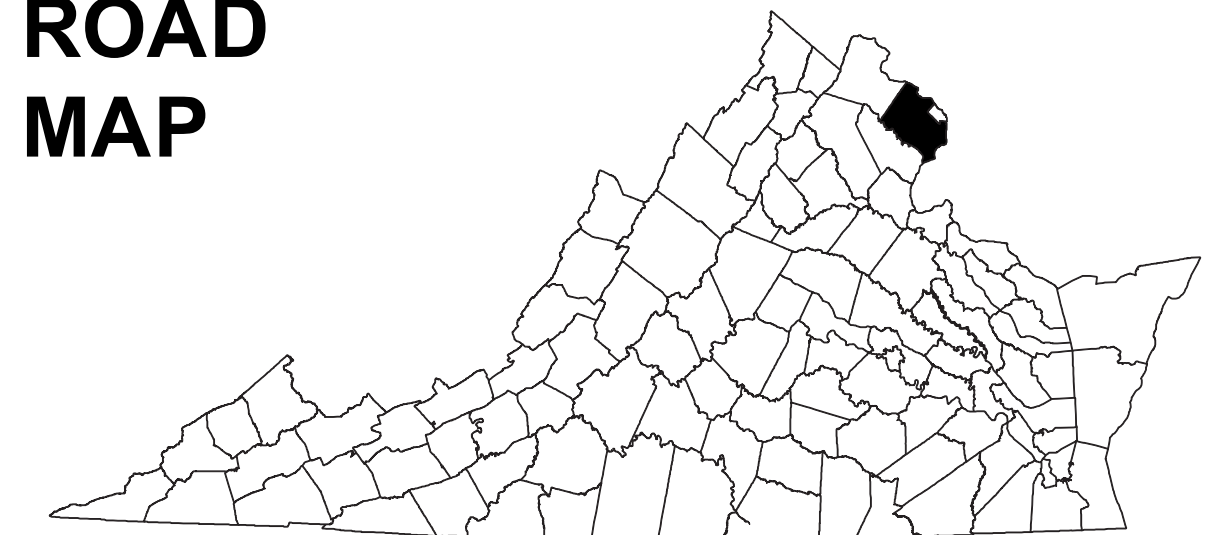


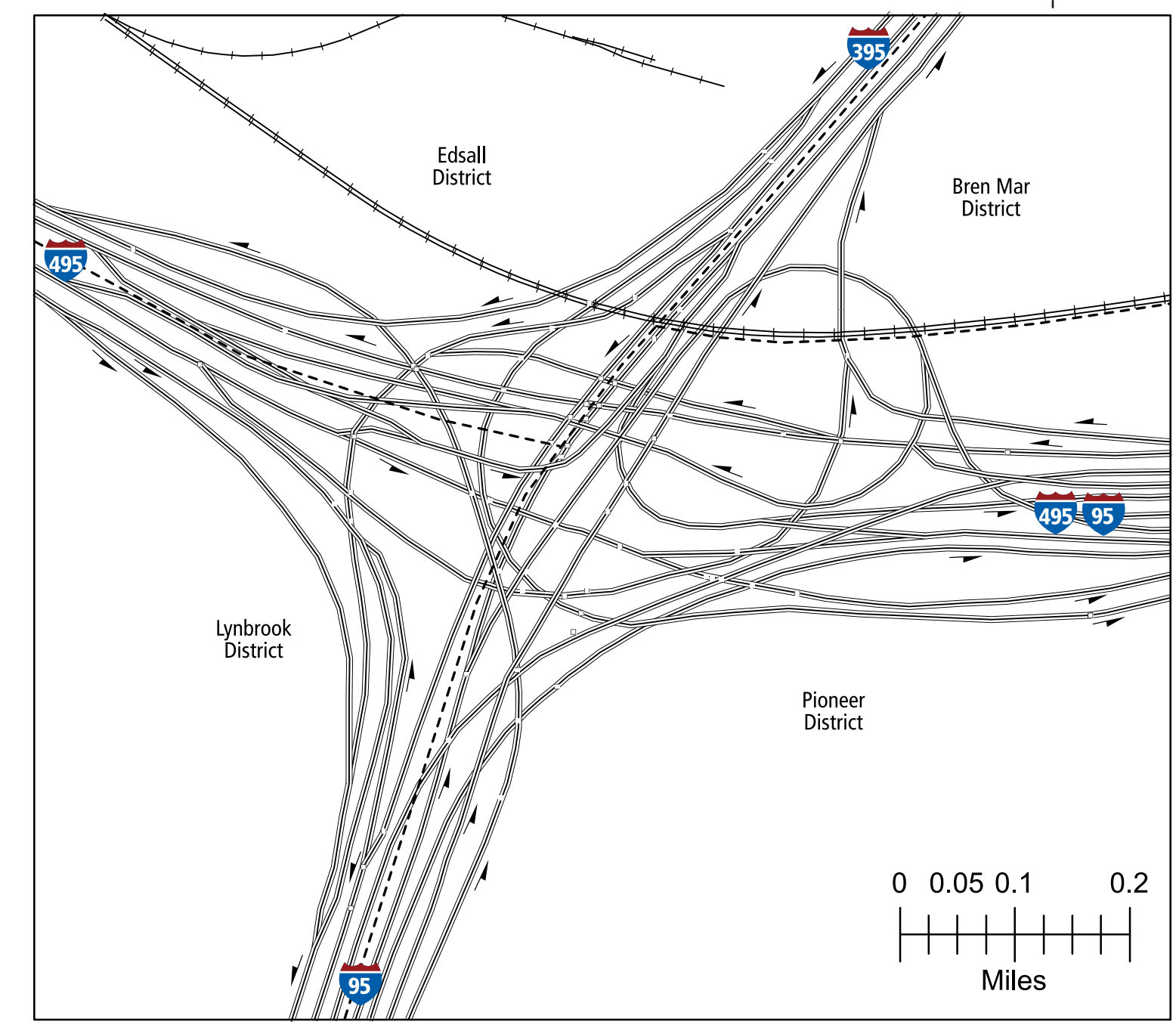
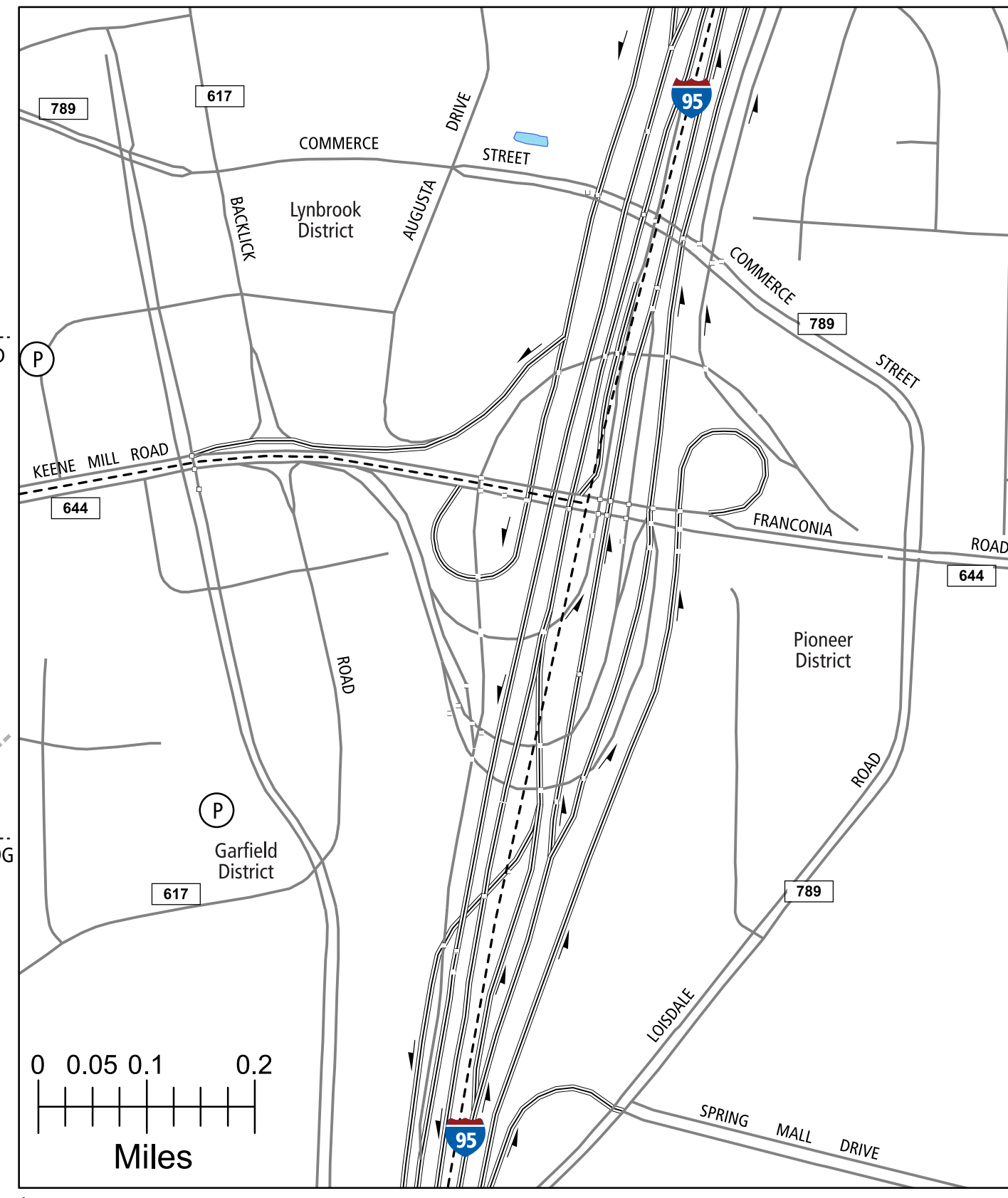
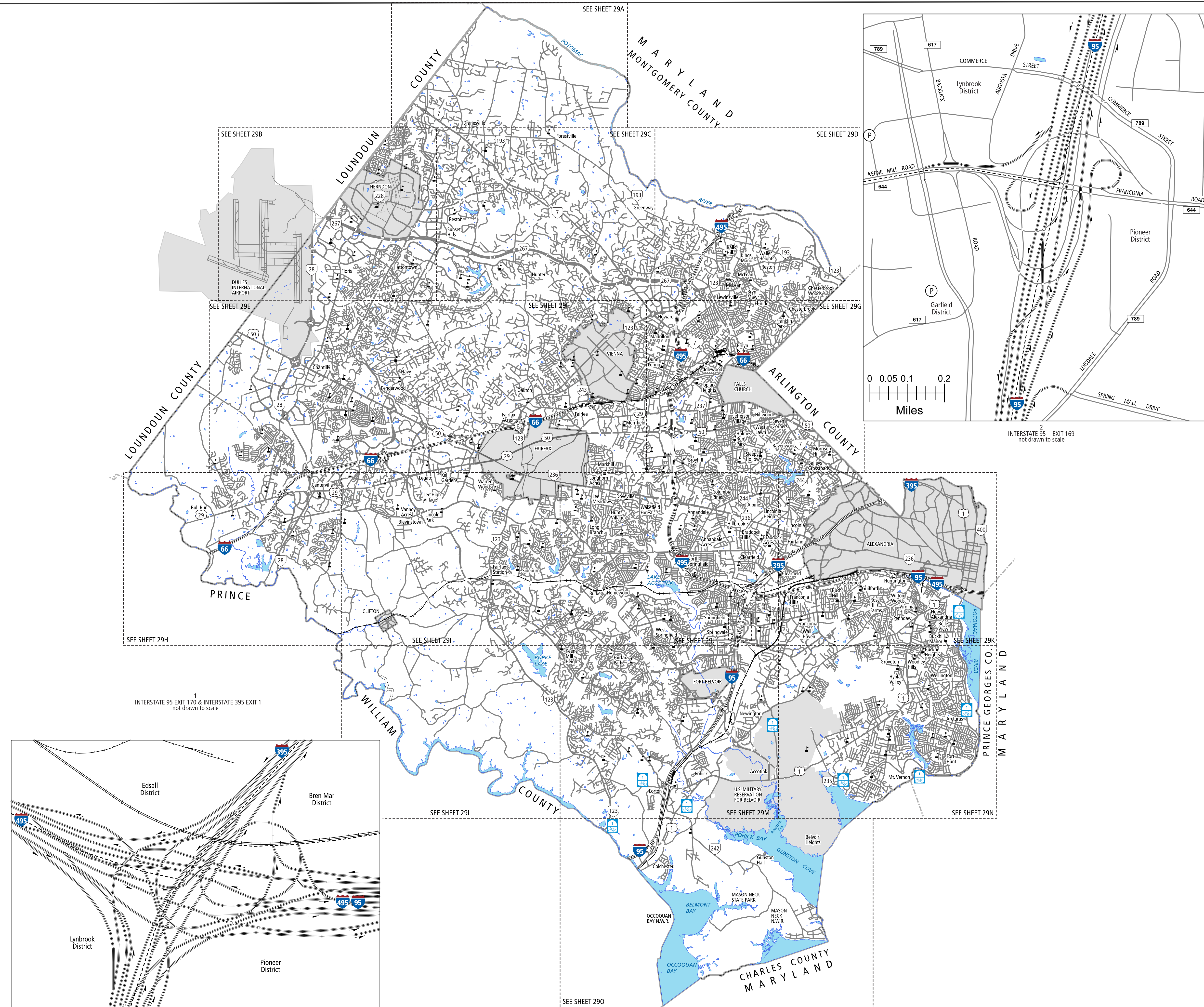
FAIRFAX COUNTY, VA



COUNTY ROAD MAP



FAIRFAX COUNTY



- | | |
|---|----------------------|
| ROAD CLASSIFICATIONS | MISCELLANEOUS |
| Frontage Road | Schools |
| Secondary Route | Seaports |
| State Route | Park_RideLots |
| U.S. Route | AIRPORTS |
| Urban Road | Commercial |
| LightSurface | General |
| DividedHwyInterstate | Military |
| AllWeatherSurface | RAILROADS |
| Unsurfaced | Metro |
| otherSurface | VARailroads |
| BikeRoutes | Park_N_Ride |
| AppalachianTrail | BOUNDARIES |
| Scenic Roads | MilitaryAreas |
| Additional ROAD CLASSIFICATION (Post 2019) | MagisterialDistricts |
| Hard-surface | Incorp_Areas |
| | Natural_LandCover |



The accuracy or completeness of this map is not guaranteed or warranted. Map depicts state-maintained highway network as of May 1, 2021. Copyright © 2021 by Commonwealth of Virginia Department of Transportation, All Rights Reserved

AN INVENTORY OF STATE MAINTAINED ROADS

TOTAL PRIMARY MILEAGE IN COUNTY 12/31/21: 176.42

SECONDARY MILEAGE TABULATION

TYPE	07/01/1932	07/01/1934	07/01/1941	TYPE	12/31/1950	12/31/1960	12/31/1970	12/31/1980	12/31/1990	12/31/2000	12/31/2004	12/31/2019	12/31/2021
BIT_SUR_PAVED	79.98	135.98	182.39	HARD SURFACE	302.35	899.36	1,430.76	1,794.98	2,261.59	2,482.28	2,535.19	2,651.89	2,660.15
GRAVEL_SOIL_ETC.	57.11	142.11	272.19	ALL WEATHER SURFACE	240.08	136.33	15.93	12.02	2.61	2.49	2.49	0	0
GRADED & DRAINED	0.00	37.32	3.63	LIGHT SURFACE	90.87	60.71	20.04	15.42	3.84	3.96	3.96	0	0
UNIMPROVED	397.76	227.08	120.65	UNSURFACED	42.22	31.59	8.93	7.94	1.57	1.57	1.12	1.12	1.12
TOTAL MILEAGE	534.85	542.49	578.66	TOTAL MILEAGE	675.52	1,127.99	1,475.66	1,830.36	2,269.61	2,490.30	2,543.21	2,653.01	2,661.27